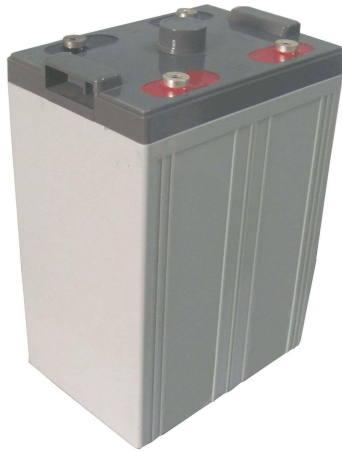
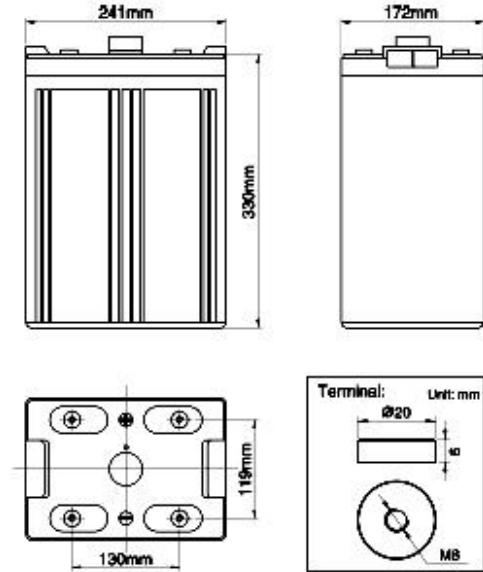


## Product Image



## Product Dimensions



## Characteristics

Nominal Voltage		2V
Nominal Capacity (10 hour rate)		500Ah
Capacity 25°C (77°F)	20 hour rate (26.5A)	530Ah
	5 hour rate (88.3A)	441.5Ah
	1 hour rate (275A)	275Ah
Internal Resistance	Full Charged Battery 25°C	≤0.31mΩ
Capacity affected by Temperature (10 hour)	40°C (104°F)	102%
	25°C (77°F)	100%
	-20°C (-4°F)	82%
	-35°C (-31°F)	65%
Self-Discharge 25°C (77°F) Capacity	after 3 month storage	92%
	after 6 month storage	84%
	after 12 month storage	65%
Charge (Constant Voltage) 25°C (77°F)	Float	Initial Charging Current Less than 100A Voltage 2.23-2.27V
	Cycle	Initial Charging Current Less than 100A Voltage 2.33-2.37V

## Packaging

Battery Dimensions	Length	223mm
	Width	187mm
	Height	350mm
	Total Height	385mm
Box Dimensions	Length	256mm
	Width	186mm
	Height	423mm
Quantity Per Box		1 PC per box
Net weight Per Cell		30.5 kg±500g
Net weight Per Box		30.5kg
Gross Weight		32kg

### Discharge Constant Current (Amperes at 77°F 25°C)

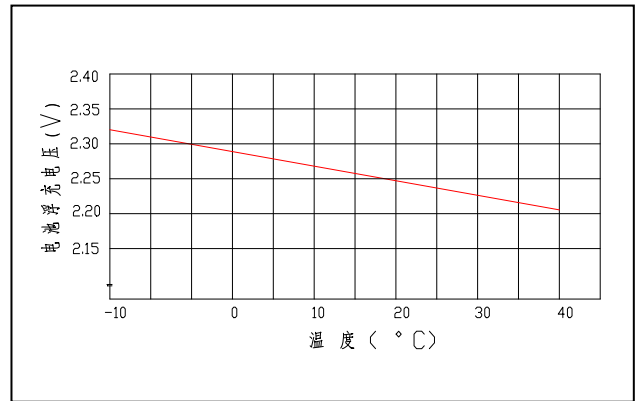
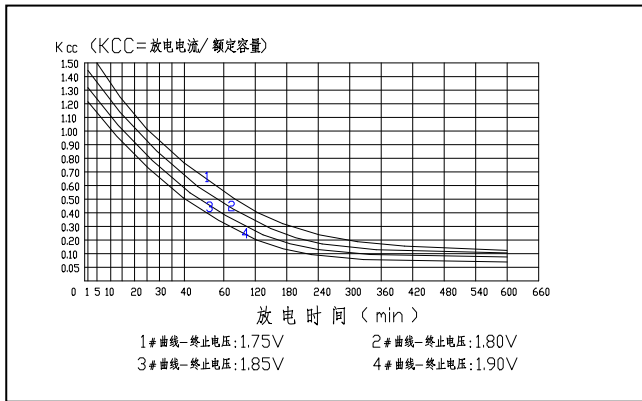
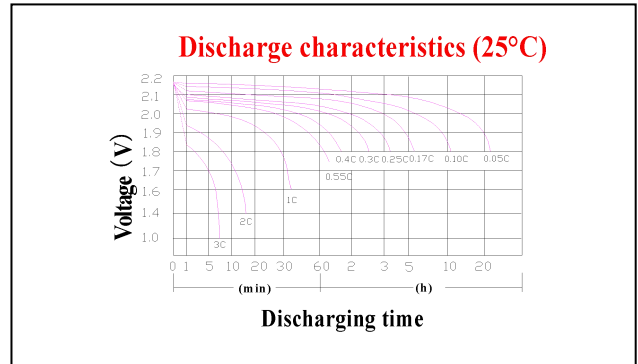
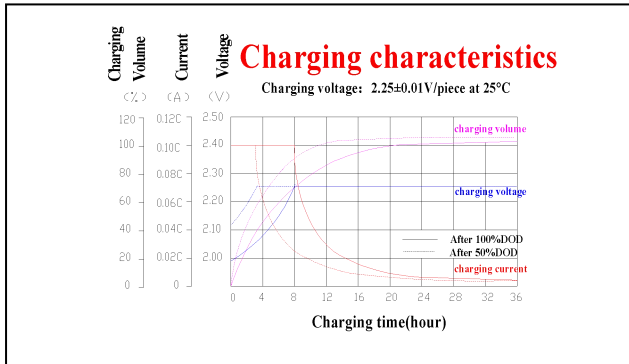
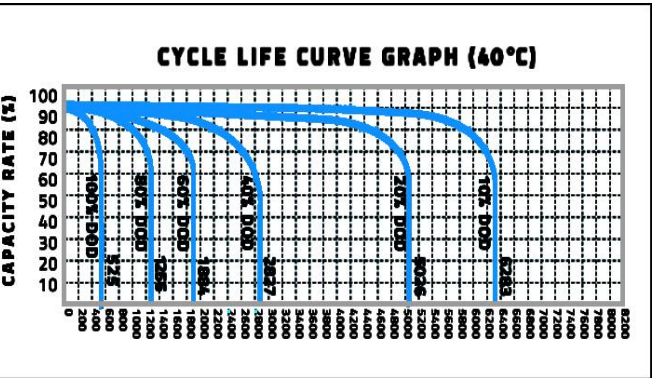
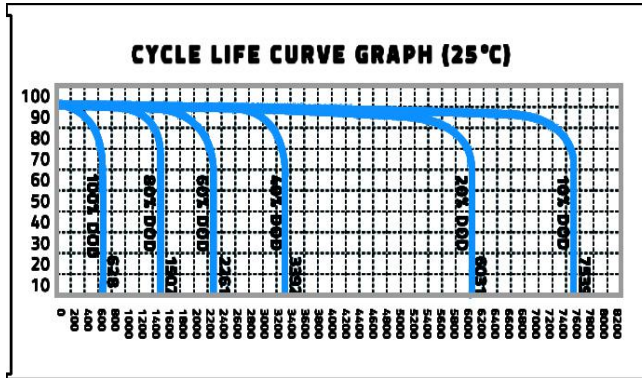
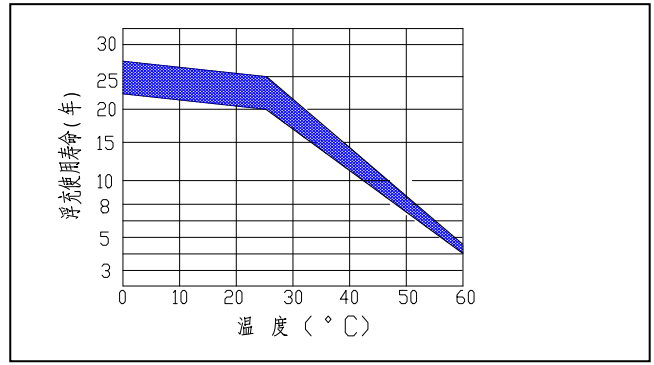
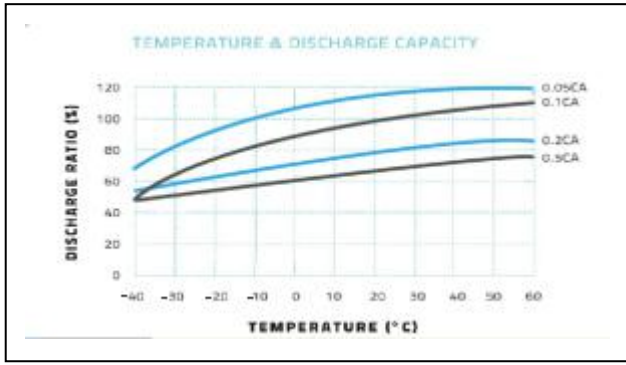
F.V/Time	5min	10min	15min	30min	45min	1h	2h	3h	5h	8h	10h	20h
1.60V	1397	902	748	495	369	303	193	138	94	62	55.0	29.2
1.65V	1372	886	734	486	362	297	189	135	92	60	54.0	28.6
1.70V	1346	869	721	477	355	292	186	133	90	59	53.0	28.1
1.75V	1321	853	707	468	348	286	182	130	88	58	52.0	27.6
1.80V	1270	820	680	450	335	275	175	125	85	56	50.0	26.5

### Discharge Constant Power (Watts at 77°F 25°C)

F.V/Time	5min	10min	15min	30min	45min	1h	2h	3h	5h	8h	10h	20h
1.60V	2689	1736	1440	953	709	582	371	265	180	119	105.9	56.1
1.65V	2640	1705	1414	936	696	572	364	260	177	116	104.0	55.1
1.70V	2591	1673	1388	918	684	561	357	255	173	114	102.0	54.1
1.75V	2543	1642	1361	901	671	551	350	250	170	112	100.1	53.1
1.80V	2445	1579	1309	866	645	529	337	241	164	108	96.3	51.0

**Note** The above data are average values, and can be obtained within 3 charge/discharge cycles. These are not minimum values. Cell and battery designs/specifications are subject to modification without notice. Contact **US** for the latest information.

## Performance Characteristics



## Battery Construction

Component	Positive plate	Negative plate	Container	Cover	Safety valve	Terminal	Separator	Electrolyte
Raw material	Lead dioxide	Lead	ABS	ABS	Si-Rubber	Copper	Fiberglass	Lead

**Guangdong JiYi General Electric Co., Ltd.**

Overseas sales office Tel: +86-020-84869873 Fax: +86-020-34628335

Domestic sales office Tel: 020-34628335 Fax: 020-34628335

E-mail: ge@gerch.cn

**GERCH®**

HTTP: //WWW.GERCH.CN