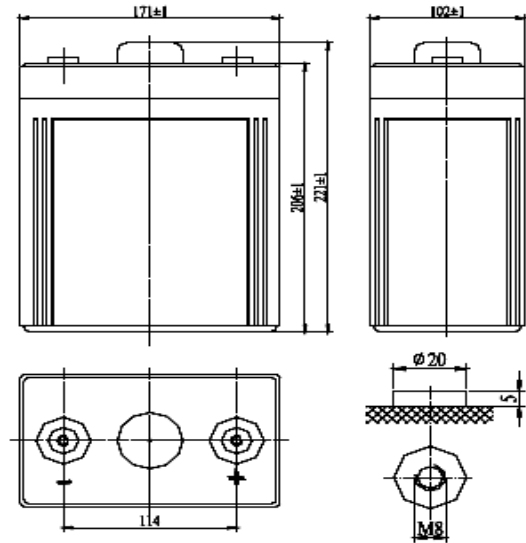


### Product Image



### Product Dimensions



### Characteristics

Nominal Voltage		2V
Nominal Capacity (10 hour rate)		160Ah
Capacity 25°C (77°F)	20 hour rate (8.5A)	170Ah
	5 hour rate (28.3A)	141.3Ah
	1 hour rate (88A)	88Ah
Internal Resistance	Full Charged Battery 25°C	≤1.5m Ω
Capacity affected by Temperature (10 hour)	40°C (104°F)	102%
	25°C (77°F)	100%
	-20°C (-4°F)	82%
	-35°C (-31°F)	65%
Self-Discharge 25°C (77°F) Capacity	after 3 month storage	90%
	after 6 month storage	80%
	after 12 month storage	62%
Charge (Constant Voltage) 25°C (77°F)	Float	Initial Charging Current Less than 22.5A Voltage 2.24-2.28V
	Cycle	Initial Charging Current Less than 22.5A Voltage 2.33-2.37V

### Packaging

Battery Dimensions	Length	171mm
	Width	102mm
	Height	206mm
	Total Height	230mm
Box Dimensions	Length	224mm
	Width	187mm
	Height	261mm
Quantity Per Box		2 PC per box
Net weight Per Cell		9.8 kg±200g
Net weight Per Box		19.6kg
Gross Weight		20.0kg

#### Discharge Constant Current per Cell (Amperes at 77°F 25°C)

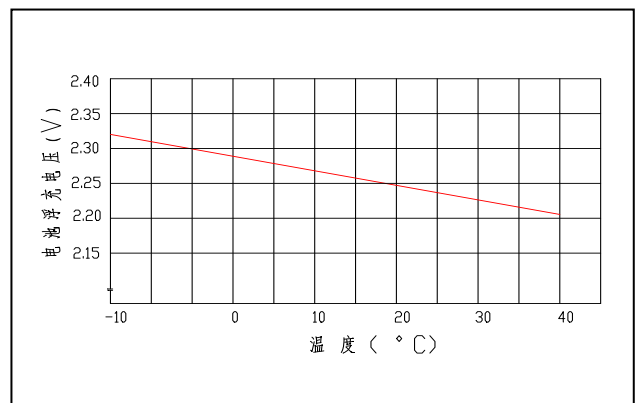
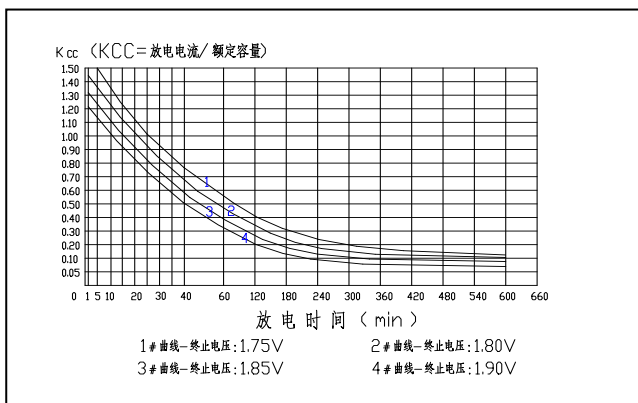
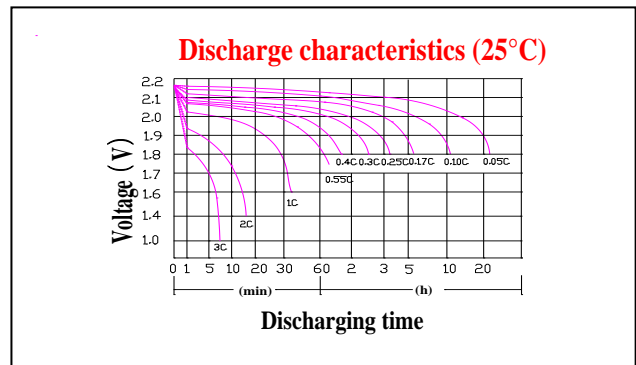
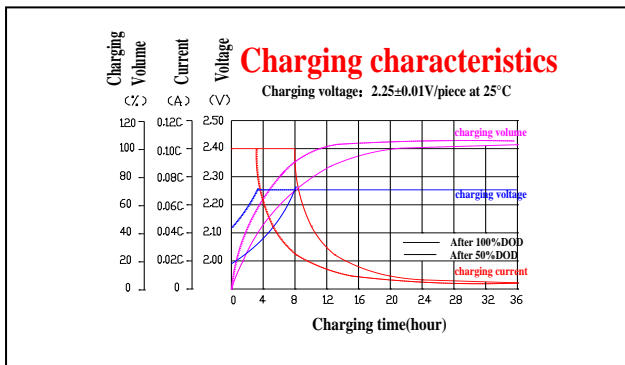
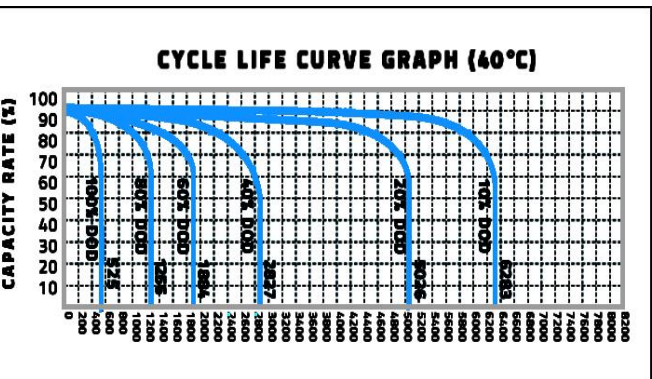
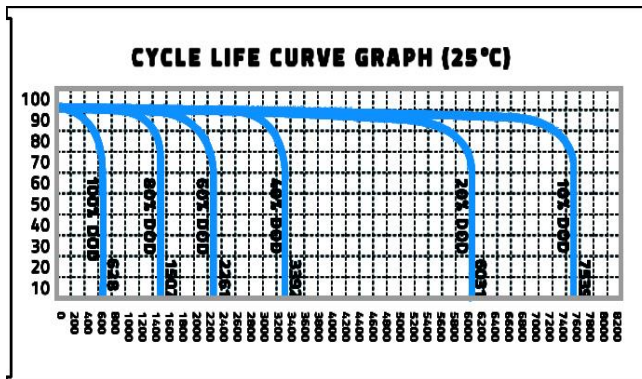
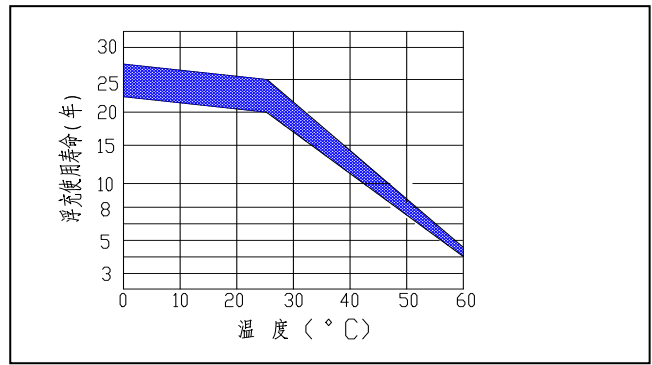
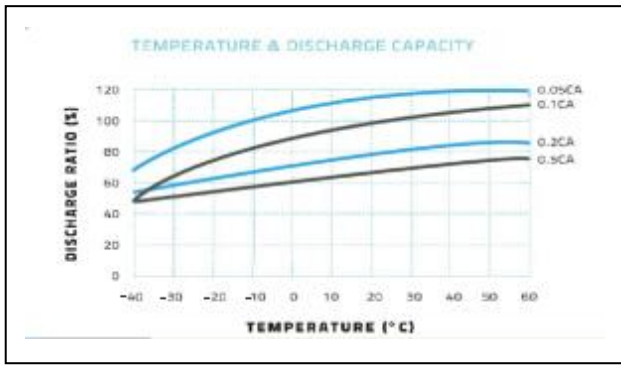
F.V/Time	5min	10min	15min	30min	45min	1h	2h	3h	5h	8h	10h	20h
1.60V	462.4	297.3	247.7	165.1	118.4	102.1	45.1	44.0	29.9	19.7	17.6	9.3
1.65V	453.9	291.8	243.2	162.1	116.3	100.2	44.2	43.2	29.4	19.4	17.3	9.2
1.70V	445.6	286.4	238.6	159.0	114.1	98.4	43.4	42.4	28.8	19.0	17.0	9.0
1.75V	437.1	281.1	234.1	156.2	112.0	96.5	42.6	41.6	28.3	18.6	16.6	8.8
1.80V	420.3	270.2	225.1	150.1	107.7	92.8	41.0	40.0	27.2	17.9	16.0	8.5

#### Discharge Constant Power per Cell (Watts at 77°F 25°C)

F.V/Time	5min	10min	15min	30min	45min	1h	2h	3h	5h	8h	10h	20h
1.60V	890.1	572.2	476.6	317.8	228.0	196.5	86.7	84.6	57.6	37.9	33.9	17.9
1.65V	873.9	561.8	468.0	312.0	223.8	193.0	85.1	83.2	56.5	37.3	33.3	17.6
1.70V	857.6	551.4	459.4	306.2	219.7	189.3	83.5	81.6	55.5	36.6	32.6	17.3
1.75V	841.4	541.0	450.7	300.5	215.5	185.8	82.1	80.2	54.4	35.8	32.0	17.0
1.80V	809.1	520.2	433.3	289.0	207.4	178.7	78.9	77.0	52.3	34.6	30.9	16.3

**Note** The above data are average values, and can be obtained within 3 charge/discharge cycles. These are not minimum values. Cell and battery designs/specifications are subject to modification without notice. Contact **US** for the latest information.

### Performance Characteristics



### Battery Construction

Component	Positive plate	Negative plate	Container	Cover	Safety valve	Terminal	Separator	Electrolyte
Raw material	Lead dioxide	Lead	ABS	ABS	Si-Rubber	Copper	Fiberglass	Lead

Guangdong JiYi General Electric Co., Ltd.

Overseas sales office Tel: +86-020-84869873

Fax: +86-020-34628335

Domestic sales office Tel: 020-34628335

Fax: 020-34628335

E-mail: ge@gerch.cn